

WINTER
2016

INFORMED

NEWSLETTER
JULY

B

F

C

Civil & Building
Contractors

Berne Fleming Civil Pty Ltd has a track record of successfully working together with you to provide cost-effective solutions to help realise client aspirations.

SERVICES PROVIDED INCLUDE:

- Project Management
- Site Inspection & Assessment
- Feasibility Studies
- Fully Integrated Design
- Construction

Seventy percent of our company's construction contracts come from former clients and more than eighty percent are awarded on a selected basis.

PRELIMINARY BUDGET CONSTRUCTION COSTS

For your use we recommend the following preliminary budget costs

- Industrial Buildings – \$900.00 m²
- Included: design, construction, electrical, storm water, and permits, static ventilation
- Excluded: air conditioning, offices and amenities
- Concrete Foundations – \$800.00 m³

Pavements

- Carparks: \$150.00 m² for 5,000m² - \$190.00m² for 500m²
- Roads: \$140m² - \$160m²
- Heavy Concrete Pavements: \$140m² - \$160m²

Included: design, drainage, kerbs and line marking

Excluded: lighting, fencing, electrical & permit costs



OUR NEW WEBSITE BFC.COM.AU

We are excited to announce the launch of our newly designed website which is now live. We have streamlined our menus to give you quick access to the items you are looking for and consolidated our information on our organisation, our work and our commitments. We hope you find the new website fresh and modern and we invite you to take a look.

MANAGING DIRECTOR'S REVIEW



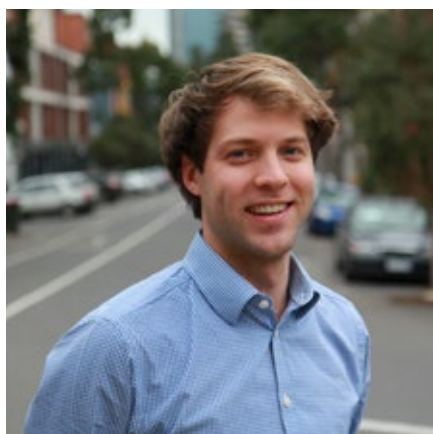
I am very happy to announce the appointment of Tom Baulch as our General Manager. Tom has been with Berne Fleming Civil since 2011. Upon joining us, Tom took on the task of achieving the external accreditation and ongoing maintenance of both our Occupational Health & Safety, Quality and Environmental Management Systems.

These certified systems have since been in full operation and comply with ISO 14001:2004, AS/NZS ISO 9001:2008 and AS/NZS ISO 14001:2004 respectively. For the past five years Tom has successfully procured and delivered a comprehensive range of civil and industrial building projects for a wide client base. As General Manager of Berne Fleming Civil, Tom is responsible for overseeing operations, growing the existing civil and building business, developing and implementing strategies and proactively implementing the Company's safety, quality and environmental policies. He brings to his new role strong analytical, project financial, negotiation, strategic and management skills and a commitment to mentoring and developing skills within the business.

Tom has both a Bachelor of Engineering (Civil & Infrastructure) with honours and a Bachelor of Business (Management with Distinction) Degree, both from RMIT University.

- **Berne Fleming**

FROM THE GENERAL MANAGER



Upon joining Berne Fleming Civil, I undertook the extensive process of gaining independent certification and maintenance of the BFC Occupational Health & Safety, Quality and Environmental Management Systems. This gave me an insight into the most important aspect of the Civil and Building Industry - in that everybody goes home without harm at the end of the day. I'm most proud of our Company's Occupational Health & Safety record; one of no time lost to injury year after year. I look forward to overseeing the continual improvement of our Integrated Management System to ensure conformity of the services delivered by our Company today, whilst continuing to establish the foundations that will underpin our success tomorrow.

I'm proud of the work we produce at BFC and give my personal commitment that we will continue to deliver what we promise safely and sustainably. Our values – Safety above all else, Integrity, Relationships and Fair return – will remain the cornerstones of our business. Our ongoing success is due to our staff. This is evident from the culture embedded within our staff and the ongoing commitment of our business to meet and exceed our Client's expectations on all projects, no matter how big or small.

We have a high staff retention rate and allow a great degree of freedom and encouragement of informal communication between colleagues and customers-ensuring the right people will be involved in solutions to any challenge. Please feel free to contact our office to discuss your next construction project.

- **Tom Baulch**



Maribyrnong Secondary College – Gordon Street Entrance Works

Berne Fleming Civil was engaged by Maribyrnong Secondary College in the fourth quarter of 2015 to construct the new VicRoads Intersection to service Maribyrnong Secondary College at River Street, Maribyrnong.

The project was undertaken to improve the overall accessibility for students, parents and staff for entry and exit into Maribyrnong Secondary College and to increase the safety for staff, parents and students utilising the College.

The works were undertaken in the fourth quarter of 2015 under heavily trafficked road conditions and included the construction of a new asphalt slip lane for entry/exit at Maribyrnong Secondary College including: bulk earthworks, crushed rock pavements, drainage, kerb and channel, medium and heavy duty asphalt pavements, guard rail works, footpath works and associated safety improvement works and line marking works.

The project will significantly improve safety and ease congestion for all road users entering and

exiting Maribyrnong Secondary College. VicRoads demanded strict conformance testing for materials, tracking of materials, tolerances for level and line, CCTV footage for all underground stormwater pipes and compaction testing in layers for all pavements were required – all of our work was approved first time without fail.

Berne Fleming Civil has been proud to work with Maribyrnong Secondary College and Wood & Grieve Engineers on this exciting new development for the College.

BOC Gases Limited – Dandenong Cryocentre Ethylene Transfill Station

Berne Fleming Civil is committed to creating and maintaining long-term relationships with industry professionals and our clients.

Berne Fleming Civil has continued to develop their long-term relationship with BOC Gases Limited in completing

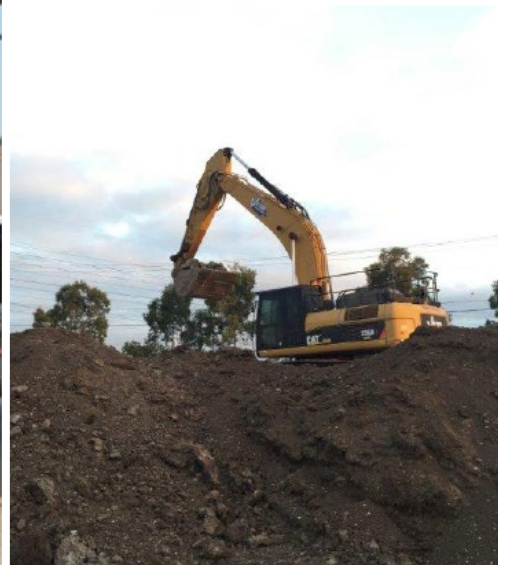
numerous Civil and Building Works at their Preston and Dandenong sites over the previous months.

We were chosen for the construction of the new Ethylene Transfill Station at their Cryocentre Site in Dandenong.

Works included bulk earthworks, heavy duty and medium duty concrete pavements, foundation works, drainage works, service

ducts, earthing grids and associated guardrail and handrail works on site.

These works were undertaken via an extensive works program to ensure onsite operations were not compromised by construction works and in strict conformance with the sites Health Safety and Environmental requirements as a result of the Hazardous Zoning and operations of the site.



VINIDEX PTY LIMITED

Rear Hardstand Extension Works

Vinidex has been Australia's leading manufacturer and supplier of pipe systems and solutions for the transportation of fluid, data and energy for over 50 years.

In 2014 Vinidex became part of the Aliaxis Group, a global leader in the manufacture of plastics pipes and fittings systems.

Aliaxis is present in over 40 countries, has more than 100 manufacturing and commercial entities and employs 15,700 people. Growth and development has always been a strong feature of the history of Vinidex which continues to the present day.

Berne Fleming Civil was engaged by Vinidex Limited to undertake the design and construction of the

Rear Hardstand Extension Project at their St. Albans Manufacturing Plant. Planning and Design works began in the middle of 2015 with on-site construction works commencing in the fourth quarter of 2015.

Works include the design and construction of some 10,000 square metres of heavy duty concrete pavements and associated drainage, electrical, data, communication and fire service works.

Stage 1 and Stage 2 works were completed in 2015 and 2016 respectively with Stage 3 works to start at the beginning of 2017.

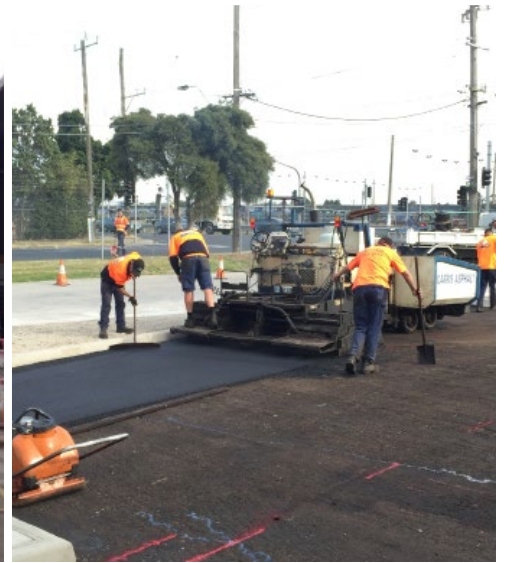
It has been a pleasure to work with Vinidex Limited on this project in continuing to build state-of-the-art manufacturing facilities to assist Vinidex in leading the industry in the development, manufacture and delivery of pipeline systems.

Rear Warehouse Canopy Extension Works

With Vinidex's expansion of their St. Albans Manufacturing Plant in Melbourne's west, Berne Fleming Civil was engaged to deliver the design and construction of a canopy extension to a warehouse built on site some 10 years ago by Berne Fleming Civil.

The project included the design and construction of a 600 square metre undercover canopy extension to accommodate the loading and unloading of products on site.

Works included the design and construction of concrete foundations, steel structure works, roof and wall cladding works, electrical works, fire service works and associated below ground drainage works.



GrainCorp - Civil Pavement and Building Works

GrainCorp Oils announced an investment of \$125 million to secure the long term viability of its integrated edible oils and spreads manufacturing operations in Australia in early 2014.

Along with sites in regional Victoria and Queensland, GrainCorp Foods West Footscray operations is being upgraded to improve and enhance the current operations of the facility to a world class food processing plant with additional capabilities with the addition of seven new retail and industrial manufacturing lines.

Due to the increase in operational activity and number of operational staff, the site requires additional parking to accommodate the high turn-over of vehicles. Berne

Fleming Civil has been proud to have worked with GrainCorp on the overall expansion project of the West Footscray Plant over the recent years.

We have been directly involved in the construction of two unique loading docks utilised by the facility back in early 2014 through to internal building modification works and parking upgrade works in 2015 and the current parking upgrade works being completed on site. These upgrade works involve the modification of the existing main car park on site and includes new pavements, new parking spaces, new entry and exits points to separate vehicle and truck access and the improvement of the overall car park's security and lighting system.

Works started in early May 2016 and are due for completion and handover in late July 2016.



P: 03 9326 6050
E: bfc@bfc.com.au
M: PO Box 1127,
Carlton Vic 3053

Visit **BFC.COM.AU**